

FSV-5B Forged Steel Wedge Gate Valve Socket Ended, Class-800

Product Description

HSN 84818030

Product : Sant Forged Steel Wedge Gate Valve
 Product Standard : BS 5352/API 602
 Type of Pattern : Standard Bore
 Pressure/Class /Rating : Class-800
 Body Material cum standard : FCS (A 105)
 Product Description : Bolted Bonnet O/S & Yoke type Rising Stem
 Type of Seat : Renewable Seat
 Type of Disc : Solid Wedge
 Trim : SS AISI 410
 Fasteners : Alloy Steel (Gr. B7/2H)
 Gasket : Spiral wound SS 304/(CAF/Graphite Filled)
 End Details : Socket Welded Ends as per ASME B16.11



Testing & Certification

Body Test Pressure : 207 barg (3000Psig.) Hyd.
 Seat Test Pressure : 152 barg (2200Psig.) Hyd. (6.9barg (100Psig.) AIR)

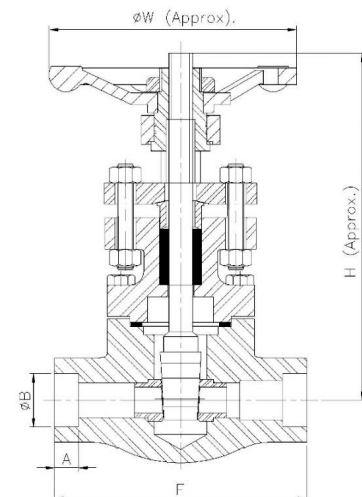
Our Works' Test Certificate is furnished with every supply.

Materials of Construction

Components	Materials	Specifications
Body, Bonnet, Gland Flange	Forged Carbon Steel	ASTM A105
Body Seat Ring, Wedge, Gland, Stem, Gland Eye Bolts, Yoke Sleeve	Stainless Steel	AISI-410
Gland Packing	Expanded Pure Flexible Graphite	—
Gasket	Spiral Wound SS (AISI-304) Asbestos Filled / Graphite Filled	—
Handwheel	M.I. / D.I.	IS:14329
Studs / Bolts	Alloy Steel	ASTM A193 Gr.B7
Nuts	High Tensile Steel	ASTM A194 Gr.2H
Gland Nuts, Screw, Wheel Nuts & Washer	Mild Steel	—

Dimensions (in mm)

Nominal Size	Nominal Size (Inches)	F	H (Approx)	W (Approx)	A	B
10	3/8	80±2	138	76	10	17.5
15	1/2	88±2	145	76	10	21.7
20	3/4	100±2	170	86	13	27.2
25	1	105±2	205	120	13	33.9
32	1.1/4	105±2	225	120	13	42.55
40	1.1/2	117±2	250	120	13	48.65



Notes

1. Product images are for illustration purposes only. Actual product may vary.
2. Actual dimensions may change over time, due to continual design improvements. Please confirm before placing order.