

## IC-1 Investment Casting Ball Valve Screwed

### Product Description

HSN 84818010

Product : Sant Investment Casting Ball Valve (CF-8)  
Pressure/Class /Rating : PN-40  
Body Material cum standard : SS 304 (CF-8)  
Product Description : Two Piece design  
Type of Seat : Renewable Teflon  
Trim : Stem, Ball Stainless Steel AISI-304  
Gland Packing : Teflon  
End Details : Screwed Female BSP Taper Threads to BS 21

### Testing & Certification

Body Test Pressure : 60kg/cm<sup>2</sup> Hyd.  
Seat Test Pressure : 40kg/cm<sup>2</sup> Hyd.

Our Works' Test Certificate is furnished with every supply.

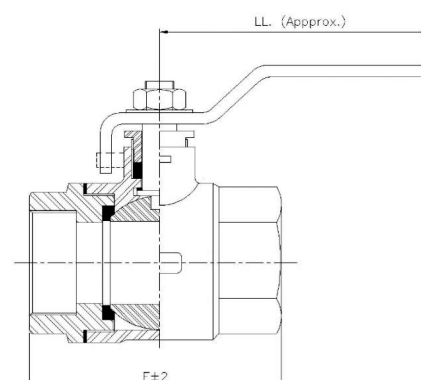


### Materials of Construction

Components	Materials	Specifications
Body, Connector	Stainless Steel	AISI-304 (CF-8)
Ball, Stem	Stainless Steel	AISI-304
Gasket, Gland Packing, Body Seats, Thrust Washer	PTFE	—
Stopper, Gland Nut, Handle & Fasteners	Mild Steel	—

### Dimensions (in mm)

Nominal Size	Nominal Size (Inches)	F	LL (Approx.)
15	1/2	58±2	98
20	3/4	66±2	125
25	1	79±2	145
32	1.1/4	90±2	145
40	1.1/2	105±2	200
50	2	124±2	200



#### Notes

- Product images are for illustration purposes only. Actual product may vary.
- Actual dimensions may change over time, due to continual design improvements. Please confirm before placing order.