

## IS-20 Bronze Ball Valve Screwed

### Product Description

HSN 84818030

Product : Sant Bronze Ball Valve  
Body Material cum standard : Gun Metal (IS:318 Gr.LTB2 )  
Product Description : 2 pc design lever operated  
Type of Seat : Renewable PTFE Seats  
Port Opening : Standard Bore  
Trim : Stem SS AISI-410, Ball SS-304/CF8  
Gland Packing : PTFE  
End Details : Screwed female threads to IS-554 Parallel

### Testing & Certification

Body Test Pressure : 500Psig. Hyd.  
Seat Test Pressure : 500Psig. Hyd.

Our Works' Test Certificate is furnished with every supply.

### Application

|       |     |
|-------|-----|
| Water | Oil |
|-------|-----|

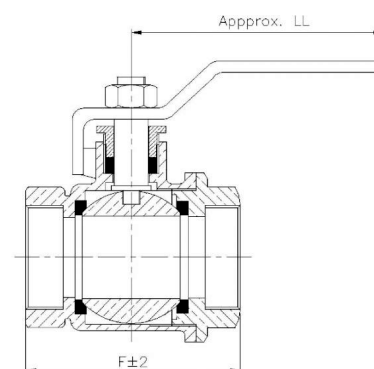


### Materials of Construction

| Components              | Materials                | Specifications |
|-------------------------|--------------------------|----------------|
| Body, Gland             | Bronze                   | IS:318 Gr.LTB2 |
| Ball                    | Stainless Steel          | SS-304/CF8     |
| Stem                    | Stainless Steel          | SS-410         |
| Body Seat & Gland Seals | Teflon                   | PTFE           |
| Fasteners & Stopper     | Mild Steel (Zinc Plated) | —              |
| Lever with PVC Sleeve   | Mild Steel               | —              |

### Dimensions (in mm)

| Nominal Size | Nominal Size (Inches) | F     | LL (Approx.) |
|--------------|-----------------------|-------|--------------|
| 8            | 1/4                   | 51±2  | 102          |
| 10           | 3/8                   | 51±2  | 102          |
| 15           | 1/2                   | 65±2  | 102          |
| 20           | 3/4                   | 65±2  | 112          |
| 25           | 1                     | 77±2  | 127          |
| 32           | 1.1/4                 | 88±2  | 150          |
| 40           | 1.1/2                 | 108±2 | 170          |
| 50           | 2                     | 120±2 | 170          |
| 65           | 2.1/2                 | 151±2 | 255          |
| 80           | 3                     | 172±2 | 255          |
| 100          | 4                     | 215±2 | 330          |



### Notes

- Product images are for illustration purposes only. Actual product may vary.
- Actual dimensions may change over time, due to continual design improvements. Please confirm before placing order.