

CR-28D Ductile Iron Butterfly Valve Wafer Type

Product Description

HSN 84813030

Product : 'SANT' Ductile Iron Butterfly Valve
 Type of Pattern : Wafer Type
 Pressure / Class / Rating : PN 25
 Body Material cum Standard : SG Iron to IS:1865
 Description : Wafer Type
 Type of Seat : Nitrile / EPDM Lining
 Type of Disc : SS Seat (CF8)
 Trim : SS AISI-410
 End Details : Suitable insertion between Flanges as per BS 10 Table D/E or ASME B 16.1, Class 125



Note : Gear system will be provided for size above 150mm.

Testing & Certification

Body Test Pressure : 3.8MPa
 Seat Test Pressure : 2.7MPa

Our Works' Test Certificate is furnished with every supply.

Application

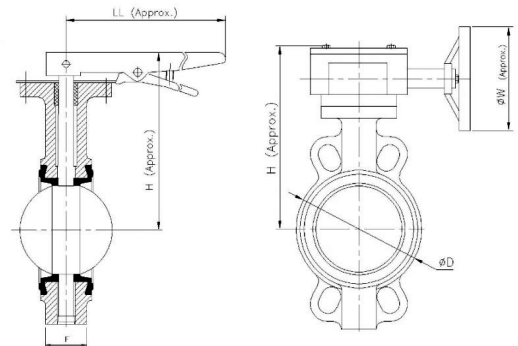
Water	Oil
-------	-----

Materials of Construction

Components	Materials	Specifications
Lever, Gear box, Handwheel	C.I.	IS:210 Gr. FG200
Stem	S.S	AISI-410
Cover Plate	Carbon Steel	—
Body,	S.G Iron /D.I.	IS:1865
Body Lining	Rubber	Nitrile / EPDM Lining
Disc	S.S.	CF8
Screw	Steel	—
Bolts & Nuts	S.S.	—

Dimensions (in mm)

Nominal Size	Nominal Size (Inches)	F	ØD	H (Approx.)	LL (Approx.)	ØW (Approx.)
40	1.1/2	33±2	85	145	200	—
50	2	43±2	95	150	200	—
65	2.1/2	46±2	110	165	200	—
80	3	46±2	125	175	200	—
100	4	52±2	153	200	260	—
125	5	56±2	179	210	260	—
150	6	56±2	209	245	260	—
200	8	60±2	260	—	—	225
250	10	68±2	315	—	—	225
300	12	78±3	370	—	—	225



Notes

1. Product images are for illustration purposes only. Actual product may vary.

2. Actual dimensions may change over time, due to continual design improvements. Please confirm before placing order.