

BBVF Brass Ball Valve with Flare Nut Screwed

Product Description

HSN 90282000

Product : Sant Brass Ball Valve with Flare Nut
Type of Pattern : Two Pcs design with Lever Operated and Flare Nut
Body & Bonnet : Brass
Type of Ball : Brass Chrome Plated
Type of Seats : PTFE Renewable Seats
Stem : Brass
Packing : PTFE
End Details : Screwed end BSP Female Threads and one end with Swivel Nut (End connection 5/8")

Testing & Certification

Body Test Pressure : 20kg/cm²g (Hyd.)
Seat Test Pressure : 13.5kg/cm²g (Hyd.)

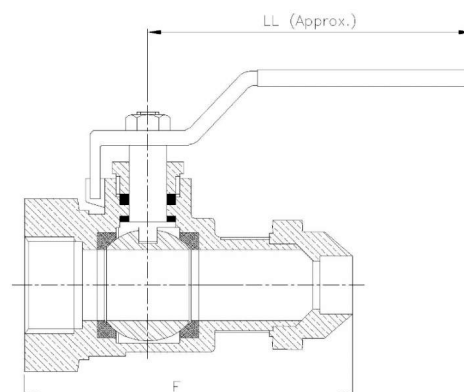


Materials of Construction

Components	Materials	Specifications
Nut	S.S.	-
Gland	Brass	-
Gland Seal	PTFE	-
Body of Ball Valve	Brass	-
Seat	PTFE	-
Ball	Brass	-
Stem	Brass	-
Flare Nut	Brass	-
Lever	M.S (Power Coated)	-

Dimensions (in mm)

Size	F	LL	T
20	77	100	3/4" BSP
25	77	100	1" BSP



Notes

1. Product images are for illustration purposes only. Actual product may vary.
2. Actual dimensions may change over time, due to continual design improvements. Please confirm before placing order.