

WM6 Single Jet Dry Type Water Meter

Features

- Dry register and register with 5 or 8 numbered roller.
- Brass body can be painted or nickel coated.
- High accuracy.
- Measuring unit is m^3
- The meters conform to ISO4064 Standard Class B.

Working Conditions

- Water temperature $\leq 30^\circ\text{C}$; hot water meter $\leq 90^\circ\text{C}$
- Water pressure $\leq 1\text{MPa}$ (PN:1.6MPa/16bar)
- $\Delta P < 0.1\text{MPa}$

Accuracy

- From minimum flow-rate (Q_{min}) inclusive, to transitional flow-rate (Q_t), exclusive: $\pm 5\%$
- From transitional flow-rate (Q_t) inclusive, to overload flow-rate (Q_s), exclusive: $\pm 2\%$
(Hot water meter: $\pm 3\%$)

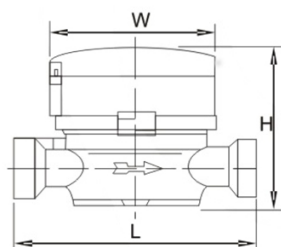


Dimensions (in mm)

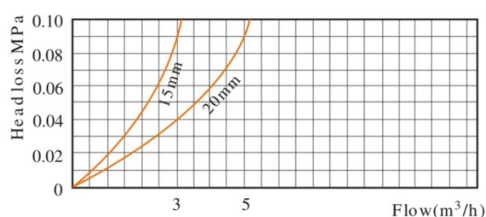
Size	Length L	Width W	Height H	Connecting Thread D
15	110	78	65	G 1/4" B

Technical Data

Nominal Size DN (mm)	Class of measurement	Overload flow- rate Q_s (m^3/h)	Permanent flow- rate Q_p (m^3/h)	Transitional flow- rate Q_t (l/h)	Minimum flow- rate Q_{min} (l/h)
15	B	3	1.5	120	30



Head Loss Curve



Error Curve

